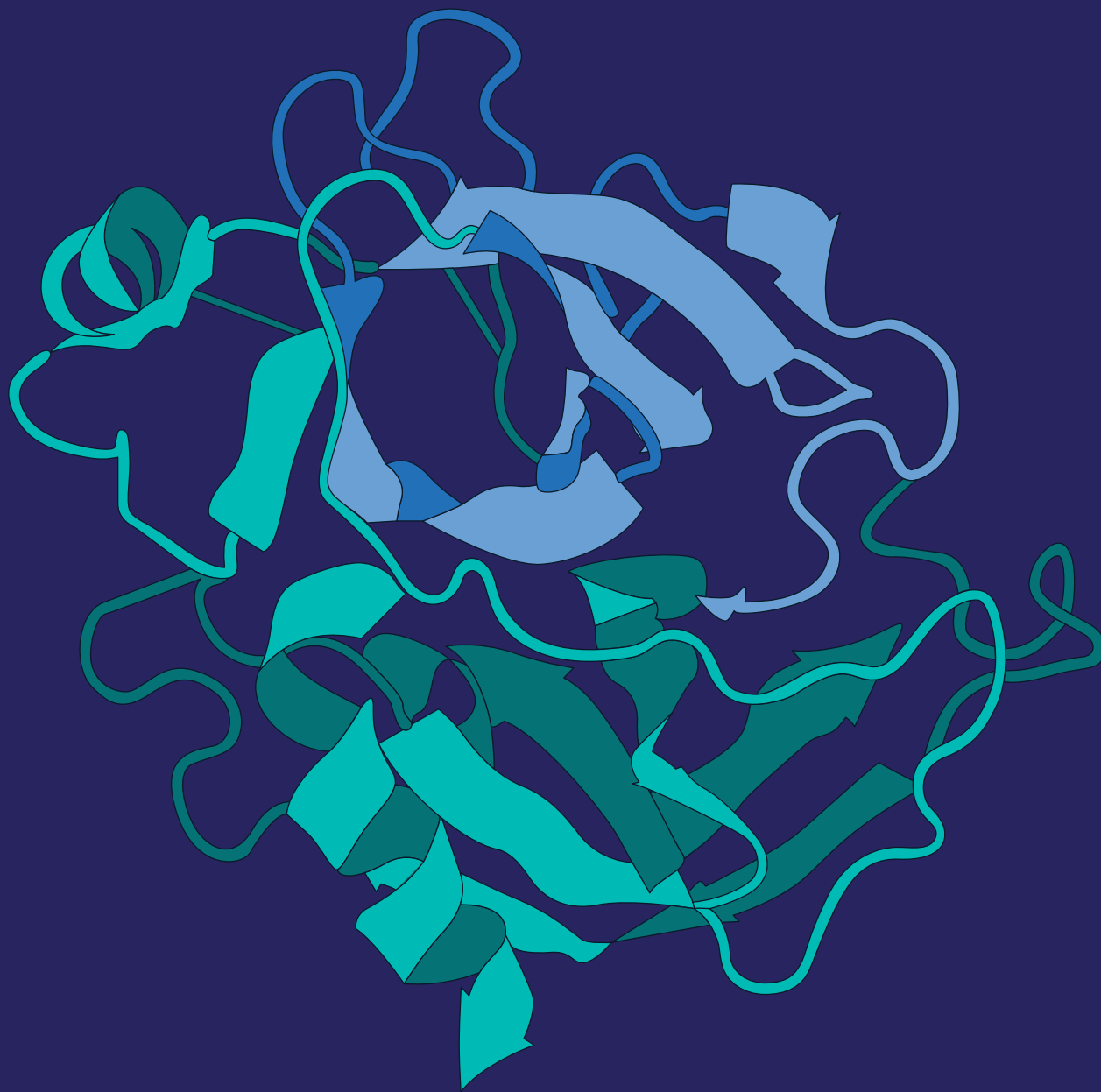


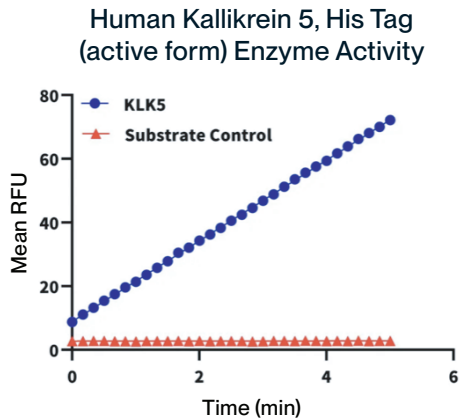


# Recombinant Kallikrein (KLK) Family Proteins

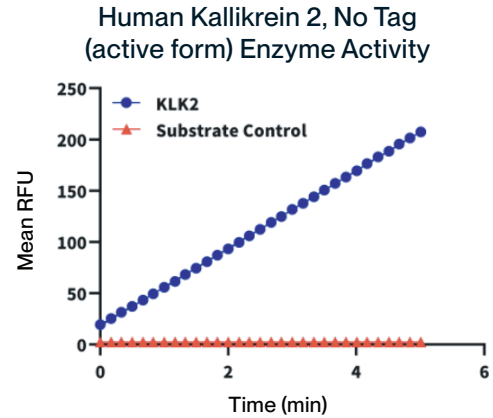


## Active KLK enzymes: Ready-to-use, skip the cleavage step!

Options for both pro-form and enzymatically active form with highest enzymatic activity on the market. Functional integrity is evaluated via rigorous enzymatic bioactivity assays.



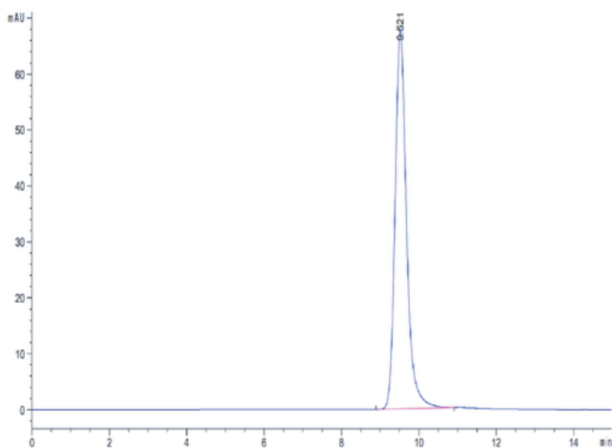
Specific activity was determined by measuring Kallikrein 5-mediated cleavage of the fluorogenic peptide substrate Boc-VPR-AMC and was  $>400$  pmol/min/ $\mu$ g (QC test).



Specific activity was determined by measuring Kallikrein-2-mediated cleavage of the fluorogenic peptide substrate PFR-AMC and was  $>450$  pmol/min/ $\mu$ g (QC test).

## High purity production and validation

The exceptional purity and homogeneity of the KACTUS recombinant KLK protein lots are validated through Bis-Tris PAGE and SEC-HPLC. KACTUS provides ultra-low endotoxin recombinant proteins guaranteed at 0.01 EU/ $\mu$ g and lower, surpassing the industry standard of  $<0.1$  EU/ $\mu$ g to prevent non-specific immune activation in complex in vitro and in vivo models.



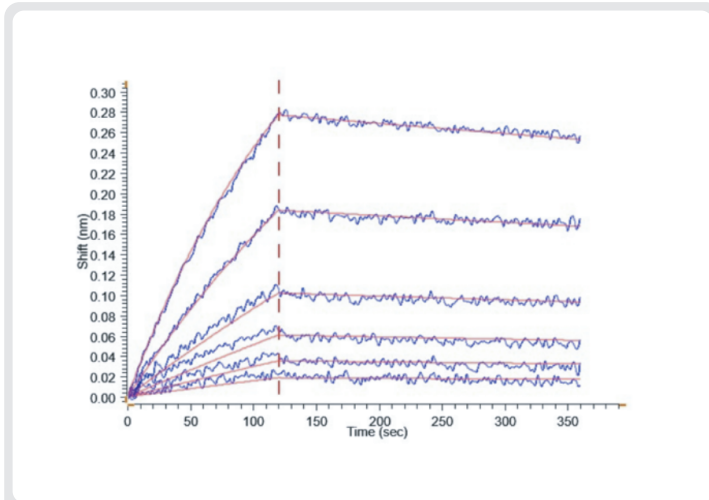
Human Kallikrein 5 purity is greater than 95% as determined by SEC-HPLC.



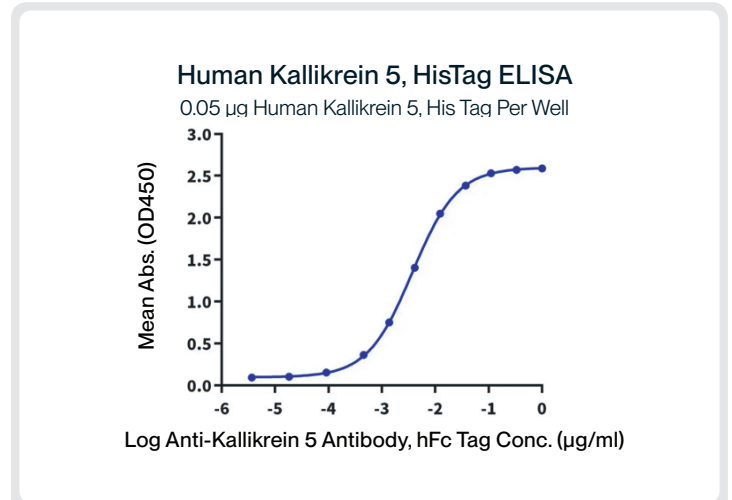
Human Kallikrein 5 on Bis-Tris PAGE under reduced condition. Purity is greater than 95%.

## ELISA and BLI profiling for KLK products

Confirmatory analysis is performed to verify protein conformation and high-affinity engagement with potential binders. Reliability and consistency are ensured through stringent purification protocols, supporting sensitive downstream screening, assay development, and diagnostic applications.



Loaded Anti-Kallikrein 5 Antibody, hFc Tag on ProA-Biosensor can bind Human Kallikrein 5, His Tag with an affinity constant of 1.23 nM as determined in BLI assay (Gator® Prime).



Immobilized Human Kallikrein 5 (active form), His Tag at 0.5 µg/ml (100 µl/Well) on the plate. Dose response curve for Anti-Kallikrein 5 Antibody with the EC50 of 3.7 ng/ml determined by ELISA (QC Test).

## KACTUS product features



Largest KLK family catalog in the industry



Compatible with in vivo and cross-species research



Lowest endotoxin levels on the market



Fast shipping

## Product list

Cat. No.	Product Name	Sequence	Species	Tag
KLK-HM101	Human Kallikrein 1/KLK1 Protein (active form)	Ile25-Ser262	Human	C-His
KLK-HM002	Human Kallikrein 2/KLK2 Protein (active form)	Ile25-Pro261	Human	No Tag
KLK-HM102	Human Kallikrein 2/KLK2 Protein (active form)	Ile25-Pro261	Human	C-His
KLK-HM002-UL	Human Kallikrein 2/KLK2 Protein (active form), Ultra Low Endotoxin	Ile25-Pro261	Human	No Tag
KLK-HM102-UL	Human Kallikrein 2/KLK2 Protein (active form), Ultra Low Endotoxin	Ile25-Pro261	Human	C-His
KLK-HM13A	Human Kallikrein 3/PSA Protein (active form)	Ile25-Pro261	Human	C-His
KLK-HM103	Human Kallikrein 3/PSA Protein (pro form)	Ala18-Pro261	Human	C-His
KLK-HM104	Human Kallikrein 4/KLK4 Protein (active form)	Ile31-Ser254	Human	C-His
KLK-HM104-UL	Human Kallikrein 4/KLK4 Protein (active form), Ultra Low Endotoxin	Ile31-Ser254	Human	C-His
KLK-HM105	Human Kallikrein 5/KLK5 Protein (active form)	Ile67-Ser293	Human	C-His
KLK-HM605	Human Kallikrein 5/KLK5 Protein (active form)	Ile67-Ser293	Human	C-His-Flag
KLK-HM105-UL	Human Kallikrein 5/KLK5 Protein (active form), Ultra Low Endotoxin	Ile67-Ser293	Human	C-His
KLK-HM605-UL	Human Kallikrein 5/KLK5 Protein (active form), Ultra Low Endotoxin	Ile67-Ser293	Human	C-His-Flag
KLK-HM126	Human Kallikrein 6/KLK6 (R80Q) Protein (active form)	Leu22-Lys244 (R80Q)	Human	C-His
KLK-HM106	Human Kallikrein 6/KLK6 Protein (active form)	Leu22-Lys244	Human	C-His
KLK-HM116	Human Kallikrein 6/KLK6 Protein (pro form)	Glu17-Lys244	Human	C-His
KLK-HM007	Human Kallikrein 7/KLK7 Protein (active form)	Ile30-Arg253	Human	No Tag
KLK-HM107	Human Kallikrein 7/KLK7 Protein (active form)	Ile30-Arg253	Human	C-His
KLK-HM007-UL	Human Kallikrein 7/KLK7 Protein (active form), Ultra Low Endotoxin	Ile30-Arg253	Human	No Tag
KLK-HM107-UL	Human Kallikrein 7/KLK7 Protein (active form), Ultra Low Endotoxin	Ile30-Arg253	Human	C-His
KLK-HM117	Human Kallikrein 7/KLK7 Protein (pro form)	Glu23-Arg253	Human	C-His
KLK-HM617	Human Kallikrein 7/KLK7 Protein (pro form)	Glu23-Arg253	Human	C-His-Flag
KLK-HM108	Human Kallikrein 8/KLK8 Protein (active form)	Val33-Gly260	Human	C-His
KLK-HM109	Human Kallikrein 9 Protein (active form)	Ala23-Asn250	Human	C-His
KLK-HM119	Human Kallikrein 9 Protein (pro form)	His16-Asn250	Human	C-His
KLK-HM111	Human Kallikrein 11/KLK11 Protein (active form)	Ile54-Asn282	Human	C-His
KLK-HM112	Human Kallikrein 12 Protein (active form)	Ile22-Asn248	Human	C-His
KLK-HM113	Human Kallikrein 13/KLK13 Protein (active form)	Val26-Gln277	Human	C-His
KLK-HM1B1	Human KLKB1 Protein (pro form)	Gly20-Ala638	Human	C-His
KLK-HM1B1-UL	Human KLKB1 Protein (pro form), Ultra Low Endotoxin	Gly20-Ala638	Human	C-His
KLK-HM402B	Biotinylated Human Kallikrein 2/KLK2 Protein (active form)	Ile25-Pro261	Human	C-His-Avi
KLK-HM405B	Biotinylated Human Kallikrein 5/KLK5 Protein (active form)	Ile67-Ser293	Human	C-His-Avi
KLK-HM407B	Biotinylated Human Kallikrein 7/KLK7 Protein (active form)	Ile30-Arg253	Human	C-His-Avi
KLK-HM417B	Biotinylated Human Kallikrein 7/KLK7 Protein (pro form)	Glu23-Arg253	Human	C-His-Avi
KLK-CM1B1	Cynomolgus KLKB1 Protein (pro form)	Gly20-Ala638	Cynomolgus	C-His
KLK-CM105	Cynomolgus Kallikrein 5/KLK5 Protein (active form)	Ile65-Ser291	Cynomolgus	C-His
KLK-CM107	Cynomolgus Kallikrein 7/KLK7 Protein (active form)	Ile30-Arg253	Cynomolgus	C-His
KLK-CM107-UL	Cynomolgus Kallikrein 7/KLK7 Protein (active form), Ultra Low Endotoxin	Ile30-Arg253	Cynomolgus	C-His
KLK-MM105	Mouse Kallikrein 5/KLK5 Protein (active form)	Gly30-Asn293	Mouse	C-His
KLK-MM105-UL	Mouse Kallikrein 5/KLK5 Protein (active form), Ultra Low Endotoxin	Gly30-Asn293	Mouse	C-His
KLK-MM107	Mouse Kallikrein 7/KLK7 Protein (active form)	Ile26-Arg249	Mouse	C-His
KLK-MM107-UL	Mouse Kallikrein 7/KLK7 Protein (active form), Ultra Low Endotoxin	Ile26-Arg249	Mouse	C-His
KLK-MM1B1	Mouse KLKB1 Protein	Gly20-Ala638	Mouse	C-His

Contact us at [sales@kactusbio.us](mailto:sales@kactusbio.us) to request a custom recombinant KLK protein.



Browse the catalog